

## **\$339,900 - 64 2051 Towne Centre Boulevard, Edmonton**

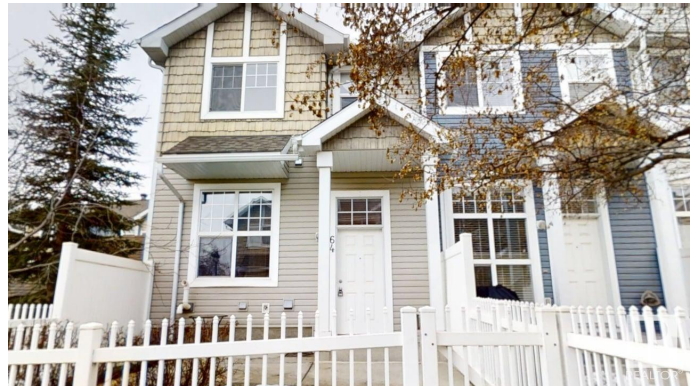
MLS® #E4429901

**\$339,900**

3 Bedroom, 2.50 Bathroom, 1,225 sqft  
Condo / Townhouse on 0.00 Acres

Terwillegar Towne, Edmonton, AB

Here is your opportunity to live in very sought after, family friendly community of Terwillegar Towne. This 3 bedrooms, 3 bathrooms, end unit townhouse w/double attached garage, in pet friendly complex, is ideally located in the complex next to visitors parking & steps to access nature reserve & green space. Property interior has been recently updated with fresh paint & carpets steam cleaned. Easy maintenance tile & laminate flooring throughout the open concept main level. Galley style kitchen w/raised eating bar & stainless steel appliance. Upstairs are 3 good size bedrooms. Primary bedroom features a walk in closet & 3 pc ensuite with full size walk in shower. .Walking distance to multiple K-12 schools, city Rec Centre, Leger main bus terminal & cafes, restaurants, stores & all amenities. Quick access to Terwillegar Drive, Anthony Henday & Whitemud freeways. Conveniently located within 5 minutes drive to all services & big box stores in Windermere. Great community to call home!



Built in 2008

### **Essential Information**

MLS® #	E4429901
Price	\$339,900
Bedrooms	3

Bathrooms	2.50
Full Baths	2
Half Baths	1
Square Footage	1,225
Acres	0.00
Year Built	2008
Type	Condo / Townhouse
Sub-Type	Townhouse
Style	2 Storey
Status	Active

### Community Information

Address	64 2051 Towne Centre Boulevard
Area	Edmonton
Subdivision	Terwillegar Towne
City	Edmonton
County	ALBERTA
Province	AB
Postal Code	T6R 0G8

### Amenities

Amenities	No Smoking Home, Parking-Visitor
Parking Spaces	2
Parking	Double Garage Attached

### Interior

Interior Features	ensuite bathroom
Appliances	Dishwasher-Built-In, Dryer, Garage Control, Garage Opener, Microwave Hood Fan, Refrigerator, Stove-Electric, Washer, Window Coverings
Heating	Forced Air-1, Natural Gas
Stories	2
Has Basement	Yes
Basement	Partial, Unfinished

### Exterior

Exterior	Wood, Vinyl
Exterior Features	Fenced, Low Maintenance Landscape, Playground Nearby, Public Swimming Pool, Public Transportation, Schools, Shopping Nearby
Roof	Asphalt Shingles

Construction	Wood, Vinyl
Foundation	Concrete Perimeter

**School Information**

Elementary	Ester Starkman
Middle	Ester Starkman
High	Lillian Osborne

**Additional Information**

Date Listed	April 9th, 2025
Days on Market	10
Zoning	Zone 14
HOA Fees	138
HOA Fees Freq.	Annually
Condo Fee	\$314

DATA IS DEEMED RELIABLE BUT IS NOT GUARANTEED ACCURATE BY THE REALTORS® ASSOCIATION OF EDMONTON. COPYRIGHT 2025 BY THE REALTORS® ASSOCIATION OF EDMONTON. ALL RIGHTS RESERVED.Trademarks are owned or controlled by the Canadian Real Estate Association (CREA) and identify real estate professionals who are members of CREA (REALTOR®, REALTORS®) and/or the quality of services they provide (MLS®, Multiple Listing Service®)

Listing information last updated on April 19th, 2025 at 6:32am MDT