

# \$529,000 - 10419 175 Avenue, Edmonton

MLS® #E4429265

**\$529,000**

4 Bedroom, 3.00 Bathroom, 2,550 sqft  
Single Family on 0.00 Acres

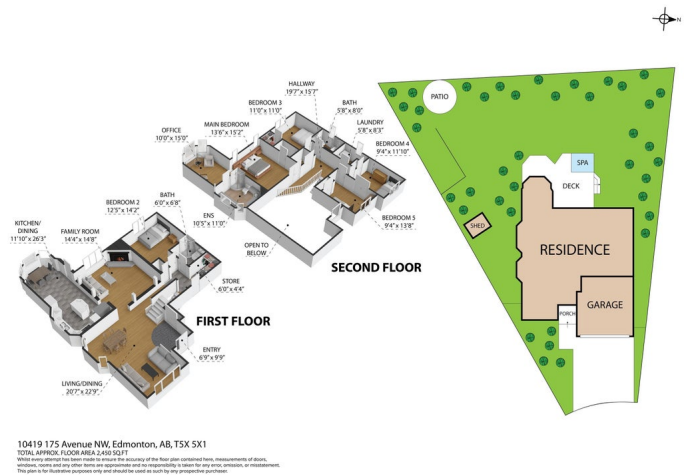
Elsinore, Edmonton, AB

welcome home to this wonderful property in a fantastic location in Elsinore. Located in the back of a cul de sac situated on a massive 819m2 pie lot this home has a dream private back yard professionally landscaped with a fire pit. The bright open 2 storey home has loads of windows and natural light pours into the main level with soaring vaulted ceilings. The main level has a spacious kitchen with wall ovens and an electric cooktop stove. Lots of counter space & an eating nook that leads out to the yard and 2 tier deck. There is also 2 living rooms, one with a gas fireplace, dining area, 3pce bath, and a large den big enough to be a bedroom. The upper level has 3 good sized bedrooms, upstairs laundry, a 4pce bath and a wild primary bedroom complete with a walk in closet, a flex area, & a fantastic ensuite bath with jacuzzi soaker tub. Some other upgrades include: central AC, water softener, & HW on demand. Complete with a double attached garage, this home is located close to amenities, shopping & schools.

Built in 1992

## Essential Information

MLS® #	E4429265
Price	\$529,000
Bedrooms	4



Bathrooms	3.00
Full Baths	3
Square Footage	2,550
Acres	0.00
Year Built	1992
Type	Single Family
Sub-Type	Detached Single Family
Style	2 Storey
Status	Active

### **Community Information**

Address	10419 175 Avenue
Area	Edmonton
Subdivision	Elsinore
City	Edmonton
County	ALBERTA
Province	AB
Postal Code	T5X 5X1

### **Amenities**

Amenities	Air Conditioner, Deck, Exterior Walls- 2"x6", Hot Water Tankless, See Remarks
Parking	Double Garage Attached, Insulated

### **Interior**

Interior Features	ensuite bathroom
Appliances	Air Conditioning-Central, Dishwasher-Built-In, Dryer, Freezer, Microwave Hood Fan, Oven-Built-In, Refrigerator, Stove-Countertop Electric
Heating	Forced Air-1, Natural Gas
Stories	2
Has Basement	Yes
Basement	Full, Unfinished

### **Exterior**

Exterior	Wood, Stucco
Exterior Features	Cul-De-Sac, Fenced, Flat Site, Landscaped, Paved Lane, Playground Nearby, Public Transportation, Schools, Shopping Nearby, See Remarks
Roof	Asphalt Shingles
Construction	Wood, Stucco

Foundation                      Concrete Perimeter

**Additional Information**

Date Listed                      April 4th, 2025

Days on Market                15

Zoning                            Zone 27

DATA IS DEEMED RELIABLE BUT IS NOT GUARANTEED ACCURATE BY THE REALTORS® ASSOCIATION OF EDMONTON. COPYRIGHT 2025 BY THE REALTORS® ASSOCIATION OF EDMONTON. ALL RIGHTS RESERVED.Trademarks are owned or controlled by the Canadian Real Estate Association (CREA) and identify real estate professionals who are members of CREA (REALTOR®, REALTORS®) and/or the quality of services they provide (MLS®, Multiple Listing Service®)

Listing information last updated on April 19th, 2025 at 7:32am MDT