

## \$449,000 - 8911 162 Street, Edmonton

MLS® #E4427690

**\$449,000**

3 Bedroom, 1.00 Bathroom, 1,031 sqft  
Single Family on 0.00 Acres

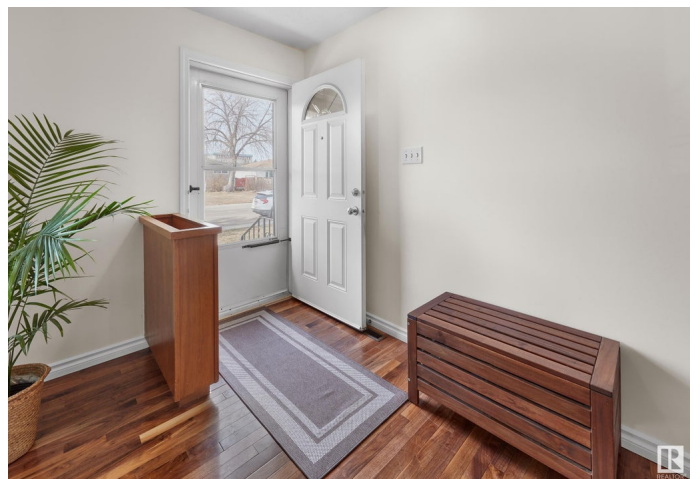
Meadowlark Park (Edmonton), Edmonton, AB

Meadowlark Park â€” the family community you have been looking for â€” with tree lined streets, parks/playgrounds, schools & close to all amenities! This 1965 home has 2062sqft of finished living space (including the basement) â€” 3 bedrooms, renovated 4-piece bath, oversized double detached heated garage â€” all located on a 5500sqft landscaped lot! Entering the home, you will love the newer windows, hardwood flooring & large living room that is open to the dining area & the open concept kitchen with ample storage & counter space. Down the hallway you will find the large primary bedroom, beds #2 & #3 are both a good size & the 4-piece bath completes the main floor. Downstairs step into the large family room & games/kidsâ€™ area & relax, the laundry room & large storage area complete the basement. Upgrades throughout the years â€” AC, roof, windows, flooring, paint & exterior & more!

Built in 1965

### Essential Information

MLS® #	E4427690
Price	\$449,000
Bedrooms	3
Bathrooms	1.00
Full Baths	1



Square Footage	1,031
Acres	0.00
Year Built	1965
Type	Single Family
Sub-Type	Detached Single Family
Style	Bungalow
Status	Active

### **Community Information**

Address	8911 162 Street
Area	Edmonton
Subdivision	Meadowlark Park (Edmonton)
City	Edmonton
County	ALBERTA
Province	AB
Postal Code	T5R 2M5

### **Amenities**

Amenities	Air Conditioner, Detectors Smoke, Parking-Extra, Vinyl Windows
Parking Spaces	4
Parking	Double Garage Detached, Heated, Over Sized

### **Interior**

Appliances	Dishwasher-Built-In, Dryer, Garage Control, Garage Opener, Refrigerator, Stove-Electric, Washer
Heating	Forced Air-1, Natural Gas
Stories	2
Has Basement	Yes
Basement	Full, Finished

### **Exterior**

Exterior	Wood, Stucco
Exterior Features	Back Lane, Fenced, Landscaped, Park/Reserve, Paved Lane, Playground Nearby, Public Transportation, Schools, Shopping Nearby
Roof	Asphalt Shingles
Construction	Wood, Stucco
Foundation	Concrete Perimeter

### **School Information**

Elementary	MeadowLark School
Middle	Hillcrest School
High	Jasper Place School

### **Additional Information**

Date Listed            March 27th, 2025

Days on Market      14

Zoning                 Zone 22

DATA IS DEEMED RELIABLE BUT IS NOT GUARANTEED ACCURATE BY THE REALTORS® ASSOCIATION OF EDMONTON. COPYRIGHT 2025 BY THE REALTORS® ASSOCIATION OF EDMONTON. ALL RIGHTS RESERVED. Trademarks are owned or controlled by the Canadian Real Estate Association (CREA) and identify real estate professionals who are members of CREA (REALTOR®, REALTORS®) and/or the quality of services they provide (MLS®, Multiple Listing Service®)

Listing information last updated on April 9th, 2025 at 10:47pm MDT