

\$184,998 - 301 9227 228 Street, Edmonton

MLS® #E4427271

\$184,998

1 Bedroom, 1.00 Bathroom, 565 sqft
Condo / Townhouse on 0.00 Acres

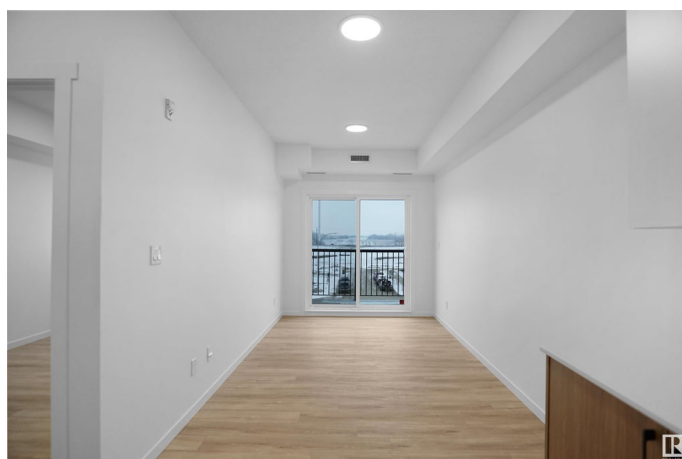
Secord, Edmonton, AB

Welcome to Nordic Village in Secord, where we master the art of Scandinavian design. This urban flat is StreetSide Developments "Lykke" model which has modern Nordic farmhouse architecture and energy efficient construction, our maintenance free townhomes & urban flats offer the amenities you need "without the big price tag. Here's what you can expect to find in this exciting new West Edmonton community. Modern finishes including quartz counters & vinyl plank flooring. Ample visitor parking, close to all amenities and much more. This unit includes a packaged terminal air conditioner and stainless steel appliances. This home is now move in ready!

Built in 2024

Essential Information

MLS® #	E4427271
Price	\$184,998
Bedrooms	1
Bathrooms	1.00
Full Baths	1
Square Footage	565
Acres	0.00
Year Built	2024
Type	Condo / Townhouse
Sub-Type	Lowrise Apartment



Style Single Level Apartment
Status Active

Community Information

Address 301 9227 228 Street
Area Edmonton
Subdivision Secord
City Edmonton
County ALBERTA
Province AB
Postal Code T5T 7R9

Amenities

Amenities No Animal Home, No Smoking Home
Parking Stall

Interior

Appliances Dishwasher-Built-In, Microwave Hood Fan, Refrigerator, Stacked Washer/Dryer, Stove-Electric
Heating Forced Air-1, Natural Gas
of Stories 3
Stories 1
Has Basement Yes
Basement None, No Basement

Exterior

Exterior Wood, Vinyl
Exterior Features Airport Nearby, Golf Nearby, Landscaped, Park/Reserve, Playground Nearby, Public Swimming Pool, Public Transportation, Schools, Shopping Nearby, See Remarks
Roof Asphalt Shingles
Construction Wood, Vinyl
Foundation Concrete Perimeter

Additional Information

Date Listed March 24th, 2025
Days on Market 12
Zoning Zone 58
Condo Fee \$184

DATA IS DEEMED RELIABLE BUT IS NOT GUARANTEED ACCURATE BY THE REALTORS® ASSOCIATION OF EDMONTON. COPYRIGHT 2025 BY THE REALTORS® ASSOCIATION OF EDMONTON. ALL RIGHTS RESERVED. Trademarks are owned or controlled by the Canadian Real Estate Association (CREA) and identify real estate professionals who are members of CREA (REALTOR®, REALTORS®) and/or the quality of services they provide (MLS®, Multiple Listing Service®)

Listing information last updated on April 5th, 2025 at 11:32am MDT