

\$624,900 - 4855 Hawthorn Bend, Edmonton

MLS® #E4426356

\$624,900

4 Bedroom, 3.00 Bathroom, 1,938 sqft
Single Family on 0.00 Acres

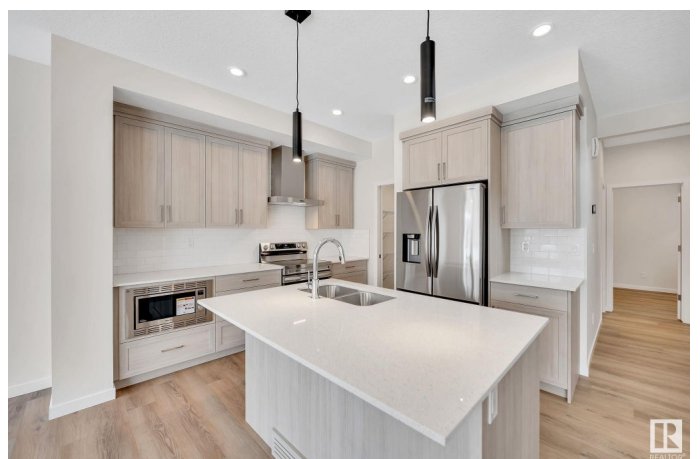
The Orchards At Ellerslie, Edmonton, AB

Welcome to this brand-new 4-bed, 3-bath home in the desirable Orchards Community, SW Edmonton! With over 1900 sq. ft., it blends comfort & style. The main floor features a spacious upgraded kitchen with stainless steel appliances, modern cabinetry & a large island, opening into the living & dining areas—perfect for gatherings. A bedroom & full bath on the main level make it ideal for guests or main-floor living. Upstairs, the primary suite offers a 4-piece ensuite & walk-in closet, plus 2 more bedrooms (one with a walk-in closet), a bonus room & upstairs laundry. Sitting on a large lot with a double garage & huge backyard, this home has a separate side entrance for future development. Close to parks, schools, shopping & major roads—ready to welcome you!

Built in 2024

Essential Information

MLS® #	E4426356
Price	\$624,900
Bedrooms	4
Bathrooms	3.00
Full Baths	3
Square Footage	1,938
Acres	0.00
Year Built	2024



Type	Single Family
Sub-Type	Detached Single Family
Style	2 Storey
Status	Active

Community Information

Address	4855 Hawthorn Bend
Area	Edmonton
Subdivision	The Orchards At Ellerslie
City	Edmonton
County	ALBERTA
Province	AB
Postal Code	T6X 3A9

Amenities

Amenities	Ceiling 9 ft., No Animal Home, No Smoking Home
Parking	Double Garage Attached

Interior

Interior Features	ensuite bathroom
Appliances	Dishwasher-Built-In, Dryer, Hood Fan, Refrigerator, Stove-Electric, Washer
Heating	Forced Air-1, Natural Gas
Stories	2
Has Basement	Yes
Basement	Full, Unfinished

Exterior

Exterior	Wood, Stone, Vinyl
Exterior Features	Airport Nearby, Playground Nearby, Public Transportation, Schools, Shopping Nearby
Roof	Asphalt Shingles
Construction	Wood, Stone, Vinyl
Foundation	Concrete Perimeter

Additional Information

Date Listed	March 19th, 2025
Days on Market	16
Zoning	Zone 53

HOA Fees 450

HOA Fees Freq. Annually

DATA IS DEEMED RELIABLE BUT IS NOT GUARANTEED ACCURATE BY THE REALTORS® ASSOCIATION OF EDMONTON. COPYRIGHT 2025 BY THE REALTORS® ASSOCIATION OF EDMONTON. ALL RIGHTS RESERVED. Trademarks are owned or controlled by the Canadian Real Estate Association (CREA) and identify real estate professionals who are members of CREA (REALTOR®, REALTORS®) and/or the quality of services they provide (MLS®, Multiple Listing Service®)

Listing information last updated on April 4th, 2025 at 6:32pm MDT