

\$415,000 - 4321 Prowse Link Link, Edmonton

MLS® #E4425229

\$415,000

3 Bedroom, 2.50 Bathroom, 1,361 sqft
Single Family on 0.00 Acres

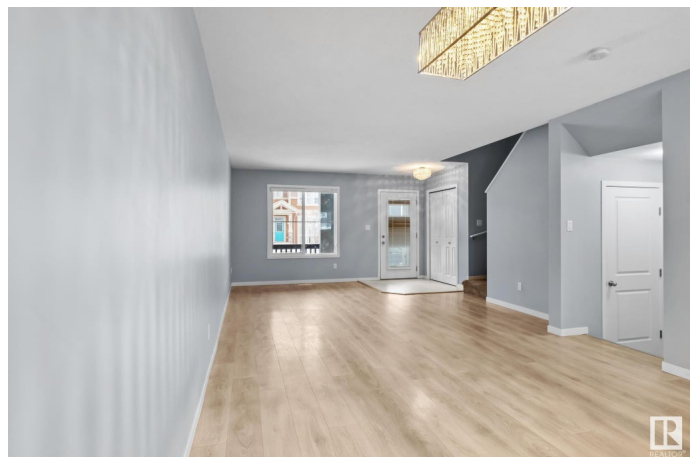
Paisley, Edmonton, AB

Welcome to this end-unit residential attached home with a detached double garage in the vibrant community of Paisley built by Brookfield with one single owner that is priced to sell! The charming front porch leads into a bright, open-concept main floor. The spacious kitchen boasts stainless steel appliances, modern cabinetry, and an island with a quartz countertop, while the dining area comes with a modern chandelier. A 2-pc bathroom is also on the main floor. Upstairs, the primary suite features a walk-in closet and 4-pc ensuite, plus two more bedrooms and another full bath with laundry on the upper floor. The unfinished basement is a blank canvas for your ideas. Outside, enjoy a fully fenced backyard with a spacious deck. Located minutes from schools, shopping, dining, Jagare Ridge Golf Club, Calgary Trail and Anthony Henday!

Built in 2018

Essential Information

MLS® #	E4425229
Price	\$415,000
Bedrooms	3
Bathrooms	2.50
Full Baths	2
Half Baths	1
Square Footage	1,361



Acres	0.00
Year Built	2018
Type	Single Family
Sub-Type	Residential Attached
Style	2 Storey
Status	Active

Community Information

Address	4321 Prowse Link Link
Area	Edmonton
Subdivision	Paisley
City	Edmonton
County	ALBERTA
Province	AB
Postal Code	T6W 3A7

Amenities

Amenities	Deck
Parking	Double Garage Detached

Interior

Interior Features	ensuite bathroom
Appliances	Dishwasher-Built-In, Microwave Hood Fan, Refrigerator, Stacked Washer/Dryer, Stove-Electric
Heating	Forced Air-1, Natural Gas
Stories	2
Has Basement	Yes
Basement	Full, Unfinished

Exterior

Exterior	Wood, Vinyl
Exterior Features	Airport Nearby, Fenced, Landscaped, Schools
Roof	Asphalt Shingles
Construction	Wood, Vinyl
Foundation	Concrete Perimeter

Additional Information

Date Listed	March 12th, 2025
Days on Market	25

Zoning

Zone 55

DATA IS DEEMED RELIABLE BUT IS NOT GUARANTEED ACCURATE BY THE REALTORS® ASSOCIATION OF EDMONTON. COPYRIGHT 2025 BY THE REALTORS® ASSOCIATION OF EDMONTON. ALL RIGHTS RESERVED. Trademarks are owned or controlled by the Canadian Real Estate Association (CREA) and identify real estate professionals who are members of CREA (REALTOR®, REALTORS®) and/or the quality of services they provide (MLS®, Multiple Listing Service®)

Listing information last updated on April 6th, 2025 at 9:02am MDT