

\$439,999 - 2826 18a Avenue, Edmonton

MLS® #E4424984

\$439,999

4 Bedroom, 3.50 Bathroom, 1,297 sqft

Single Family on 0.00 Acres

Laurel, Edmonton, AB

Welcome to this warm and inviting 2-storey half duplex in the thriving community of Laurel. Upon entering, you'll be greeted by an abundance of natural light, with additional windows in the front foyer and stairwell. The main floor features engineered hardwood floors and an open-concept layout that seamlessly connects the kitchen, living, and dining areas. The kitchen is a chef's dream, with ample counter space, quartz countertops, cabinet pull-outs, and a large pantry. It overlooks the living room, which boasts a stunning stone gas fireplace. The south-facing windows in the living area ensure plenty of sunlight throughout the day. Upstairs, the master bedroom offers a spacious, bright walk-in closet and a 4-piece ensuite bathroom. The finished basement includes a finished bedroom, laundry area, and additional living space.

Built in 2013

Essential Information

MLS® #	E4424984
Price	\$439,999
Bedrooms	4
Bathrooms	3.50
Full Baths	3
Half Baths	1



Square Footage 1,297
 Acres 0.00
 Year Built 2013
 Type Single Family
 Sub-Type Half Duplex
 Style 2 Storey
 Status Active

Community Information

Address 2826 18a Avenue
 Area Edmonton
 Subdivision Laurel
 City Edmonton
 County ALBERTA
 Province AB
 Postal Code T6N 0N8

Amenities

Amenities Deck, Detectors Smoke, Roofing Deck/Patio
 Parking Double Garage Detached

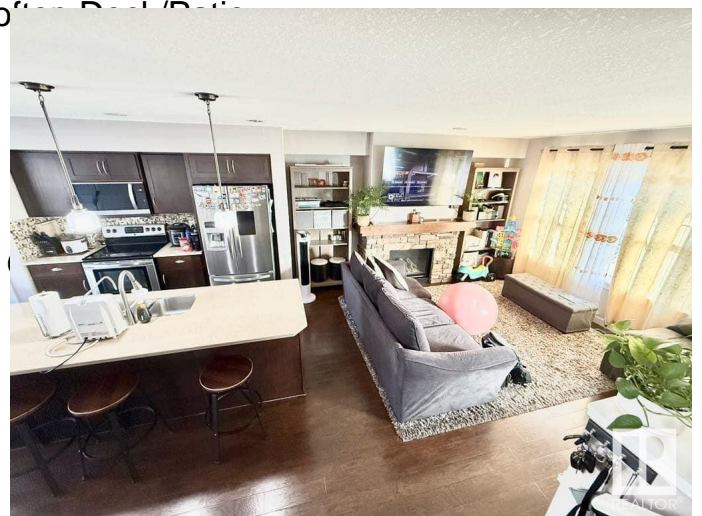
Interior

Interior Features ensuite bathroom
 Appliances Dishwasher-Built-In, Dryer, Stove-Electric, Washer
 Heating Forced Air-1, Natural Gas
 Fireplace Yes
 Fireplaces Masonry
 Stories 3
 Has Basement Yes
 Basement Full, Finished

Exterior

Exterior Wood, Vinyl
 Exterior Features Commercial, Fenced, Public Transportation, Schools, Shopping Nearby
 Roof Asphalt Shingles
 Construction Wood, Vinyl
 Foundation Concrete Perimeter

Additional Information



Date Listed	March 10th, 2025
Days on Market	26
Zoning	Zone 30

DATA IS DEEMED RELIABLE BUT IS NOT GUARANTEED ACCURATE BY THE REALTORS® ASSOCIATION OF EDMONTON. COPYRIGHT 2025 BY THE REALTORS® ASSOCIATION OF EDMONTON. ALL RIGHTS RESERVED. Trademarks are owned or controlled by the Canadian Real Estate Association (CREA) and identify real estate professionals who are members of CREA (REALTOR®, REALTORS®) and/or the quality of services they provide (MLS®, Multiple Listing Service®)

Listing information last updated on April 5th, 2025 at 12:32am MDT