

Courtesy Of Leanne M Leuschen Of Liv Real Estate

## \$845,000 - 168 Weaver Drive, Edmonton

MLS® #E4424289

**\$845,000**

5 Bedroom, 3.50 Bathroom, 2,786 sqft  
Single Family on 0.00 Acres

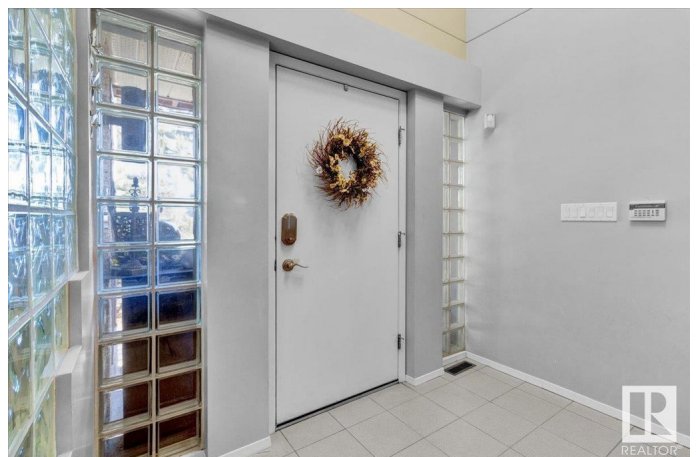
Wedgewood Heights, Edmonton, AB

Welcome home to this custom built, meticulously maintained, family home located in the lovely neighbourhood of Wedgewood Heights. The spacious main floor offers beautiful hardwood floors, ceramic tile and an abundance of windows. The large kitchen has stainless steel appliances, walk in pantry and plenty of cabinet and counter space. There are 2 living room areas, a spacious dining room perfect for entertaining, a breakfast nook and a bedroom or office on the main floor. In addition the laundry is conveniently located on the main level. Upstairs you will find 3 spacious bedrooms with the primary offering a large ensuite and walk in closet. Downstairs has an additional living room, bedroom, 4 pc bathroom, office and flex room. The professionally landscaped backyard is your perfect summer retreat. This home is steps away from the park, tennis courts, walking trails and the ravine. Conveniently located close to the Anthony Henday, transit and amenities.

Built in 1990

### Essential Information

MLS® #	E4424289
Price	\$845,000
Bedrooms	5



Bathrooms	3.50
Full Baths	3
Half Baths	1
Square Footage	2,786
Acres	0.00
Year Built	1990
Type	Single Family
Sub-Type	Detached Single Family
Style	2 Storey
Status	Active

### **Community Information**

Address	168 Weaver Drive
Area	Edmonton
Subdivision	Wedgewood Heights
City	Edmonton
County	ALBERTA
Province	AB
Postal Code	T6M 2K3

### **Amenities**

Amenities	Deck, Gazebo, No Smoking Home
Parking	Double Garage Attached

### **Interior**

Interior Features	ensuite bathroom
Appliances	Dishwasher-Built-In, Dryer, Garage Control, Garage Opener, Garburator, Microwave Hood Fan, Refrigerator, Stove-Electric, Washer, Window Coverings
Heating	Forced Air-2, Natural Gas
Fireplace	Yes
Fireplaces	Glass Door
Stories	3
Has Basement	Yes
Basement	Full, Finished

### **Exterior**

Exterior	Wood, Stucco
Exterior Features	Fenced, Landscaped, No Back Lane, Playground Nearby

Roof	Wood Shingles
Construction	Wood, Stucco
Foundation	Concrete Perimeter

### **School Information**

Elementary	Michael A Kostek School
Middle	S. Bruce Smith School
High	Jasper Place School

### **Additional Information**

Date Listed	March 6th, 2025
Days on Market	35
Zoning	Zone 20
HOA Fees	350
HOA Fees Freq.	Annually

DATA IS DEEMED RELIABLE BUT IS NOT GUARANTEED ACCURATE BY THE REALTORS® ASSOCIATION OF EDMONTON. COPYRIGHT 2025 BY THE REALTORS® ASSOCIATION OF EDMONTON. ALL RIGHTS RESERVED. Trademarks are owned or controlled by the Canadian Real Estate Association (CREA) and identify real estate professionals who are members of CREA (REALTOR®, REALTORS®) and/or the quality of services they provide (MLS®, Multiple Listing Service®)

Listing information last updated on April 9th, 2025 at 10:32pm MDT