

## \$229,900 - 216 11615 Ellerslie Road, Edmonton

MLS® #E4413276

**\$229,900**

2 Bedroom, 2.00 Bathroom, 893 sqft

Condo / Townhouse on 0.00 Acres

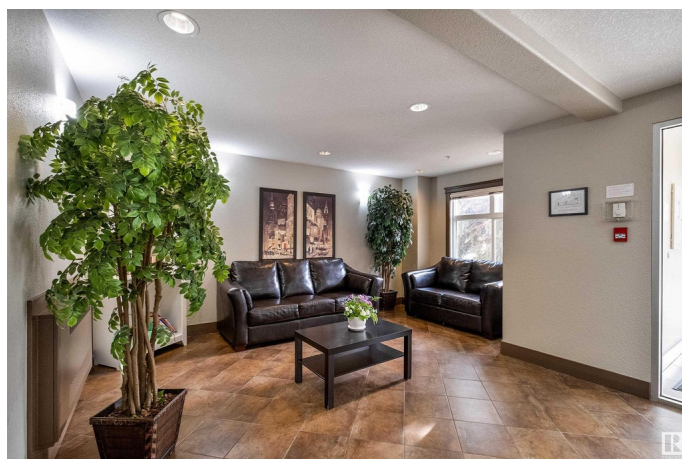
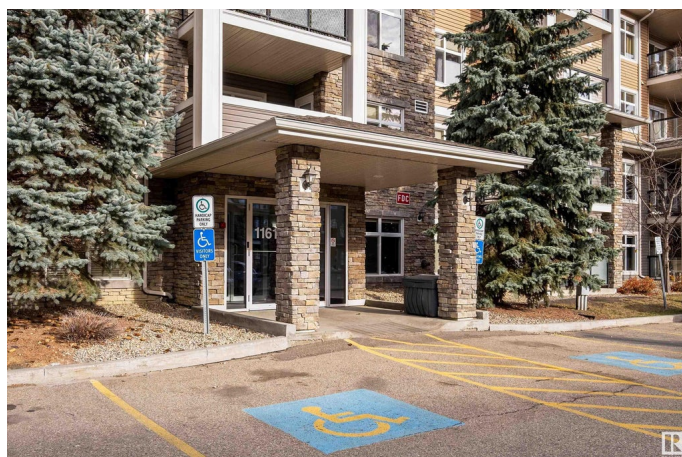
Rutherford (Edmonton), Edmonton, AB

Conveniently located in the Rutherford Gates community this 2 bed, 2 bath second floor condo offers a unique floor plan and TWO titled underground parking stalls! Offering almost 900sqft of living space, spacious bedrooms with walk-in closet's (5x8 primary closet), 3 pce ensuite, in-suite laundry & storage + underground storage cage, island kitchen, nat gas BBQ line, games & exercise room, visitor parking & guest suite this complex has it all. Location is key as your steps away from MAJOR amenities, shopping centres, commuter roads, public transport, Blackburn Creek Park and so much more. This would be the perfect choice for the first time home buyer, investor or empty nester!

Built in 2007

### Essential Information

MLS® #	E4413276
Price	\$229,900
Bedrooms	2
Bathrooms	2.00
Full Baths	2
Square Footage	893
Acres	0.00
Year Built	2007
Type	Condo / Townhouse



Sub-Type	Lowrise Apartment
Style	Single Level Apartment
Status	Active

### Community Information

Address	216 11615 Ellerslie Road
Area	Edmonton
Subdivision	Rutherford (Edmonton)
City	Edmonton
County	ALBERTA
Province	AB
Postal Code	T6W 0J3

### Amenities

Amenities	Deck, Detectors Smoke, Exercise Room, Guest Suite, Parking-Visitor, Party Room, Storage-In-Suite, Storage Cage, Natural Gas BBQ Hookup
Parking	Parkade, Underground

### Interior

Interior Features	ensuite bathroom
Appliances	Dishwasher-Built-In, Dryer, Microwave Hood Fan, Refrigerator, Stove-Electric, Washer, Curtains and Blinds
Heating	Baseboard, Natural Gas
# of Stories	4
Stories	1
Has Basement	Yes
Basement	None, No Basement

### Exterior

Exterior	Wood, Stone, Vinyl
Exterior Features	Public Transportation, Schools, Shopping Nearby
Roof	Asphalt Shingles
Construction	Wood, Stone, Vinyl
Foundation	Concrete Perimeter

### Additional Information

Date Listed	November 9th, 2024
Days on Market	160
Zoning	Zone 55

Condo Fee                \$608

DATA IS DEEMED RELIABLE BUT IS NOT GUARANTEED ACCURATE BY THE REALTORS® ASSOCIATION OF EDMONTON. COPYRIGHT 2025 BY THE REALTORS® ASSOCIATION OF EDMONTON. ALL RIGHTS RESERVED.Trademarks are owned or controlled by the Canadian Real Estate Association (CREA) and identify real estate professionals who are members of CREA (REALTOR®, REALTORS®) and/or the quality of services they provide (MLS®, Multiple Listing Service®)

Listing information last updated on April 17th, 2025 at 11:47pm MDT